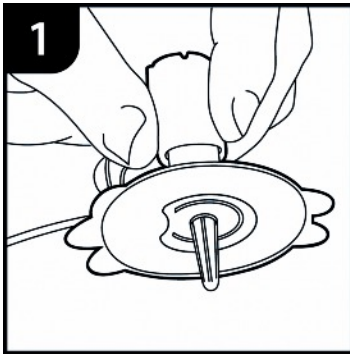


# Saflo 90 Abbreviated Instructions

**Users should familiarise themselves with the manufacturer's full instructions for use before using this device.**

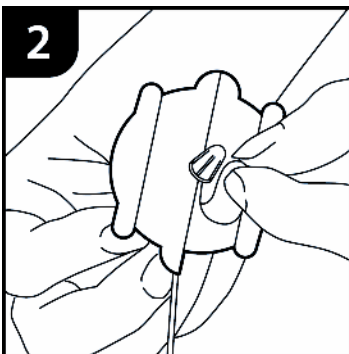


Remove the Saflo 90 from its packaging. Ensure that the needle protector is in place and there are no visible signs of damage to the product.

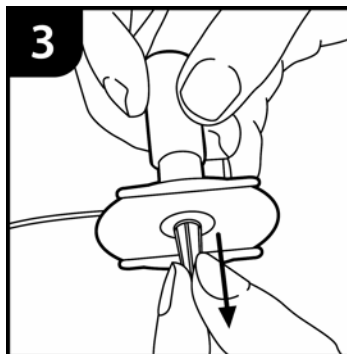
Note the product code and batch number if required for record keeping.

Prime the infusion set according to local procedures or, if used with an infusion pump, according to the pump manufacturer's instructions.

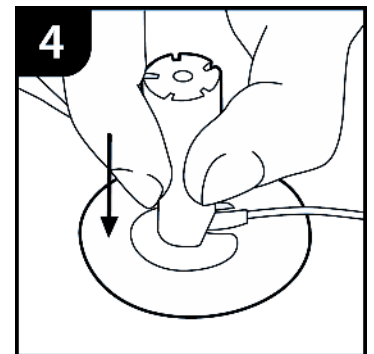
Prepare the infusion site according to local guidelines.



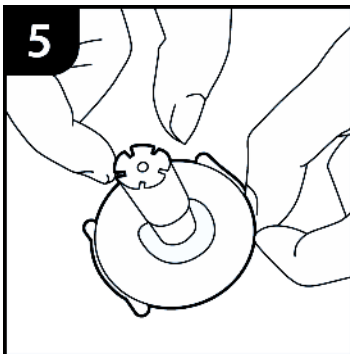
Remove the central portions of the tape from the infusion set.



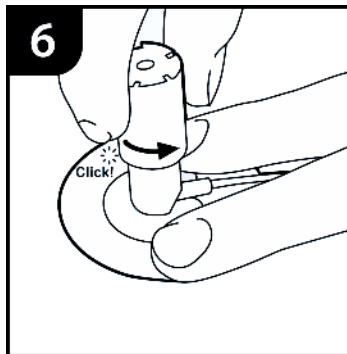
When ready to insert the infusion set, remove the needle protector.



Insert the infusion set into the tissue with a smooth downward motion. Press the central portion of the tape to ensure the infusion set is firmly attached to the skin.

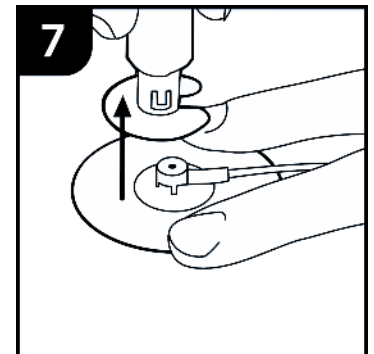


Remove the side portions of the tape backing and smooth the tape onto the skin surface.

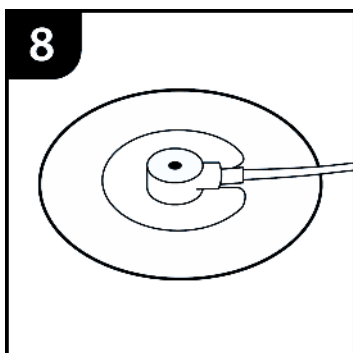


Twist the cap of the device gently to the left through approximately  $\frac{1}{4}$  turn.

A click will be heard and a visible indicator will appear at the top of the cap to show that the needle has been withdrawn and is fully protected.



Hold down the tape of the infusion set and lift the needle assembly away from the site.



Move the protective cover along the tubing and press gently down onto the infusion site.

Dispose of the protected needle assembly in a container suitable for contaminated waste according to local procedures.

# Saflo 90 General User Notes

These are additional guidelines to supplement the manufacturers instructions for use. It is important that you follow the full instructions and comply with your hospital or area procedures in all matter relating to infusions using these devices.

The Saflo 90 is available in two basic variations of different catheter as follows:

Product Code	Supplychain order code	Use
SF90-109	FSB1935	9mm catheter for general purpose use. Not to be used on chest wall. The device is colour coded <b>BLUE</b> for identification.
SF90-106	FSB1933	6mm catheter for use on smaller or emaciated patients with reduced tissue depth. Not to be used on the chest well. The device is colour coded <b>GREEN</b> for identification.

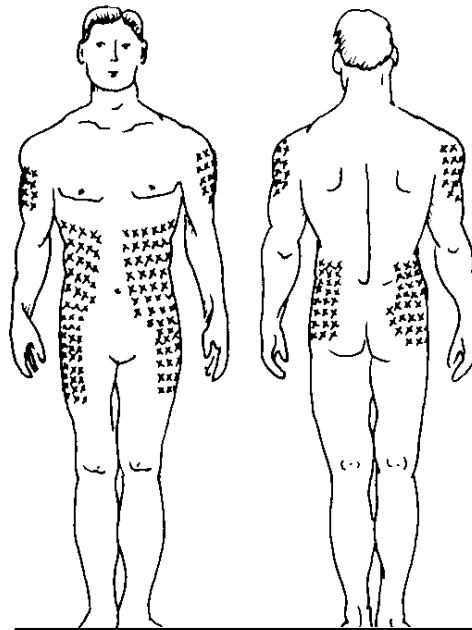
## Where to insert

The most common areas for insertion of the Saflo 90 are illustrated in the figure alongside.

Be careful to avoid areas where there may be pressure from tight clothing, belts etc.

The device tape is adequate to secure the device in most cases. If a patient may be agitated and inclined to pull on the infusion set additional tape can be used to secure the set.

Secure a small loop of the tubing a few inches from the infusion site to reduce the risk of pulling on the site.



## Duration of site use

The Saflo 90 device instructions for use (IFU) state the device can be used for '**72 hours or at healthcare professionals discretion**'. In most applications it is anticipated that 72 hours will be an acceptable minimum time. However certain drug combinations and the general health of the patient may determine a shorter or longer time period.

It is important to examine the infusion site at regular intervals to ensure there is no deterioration of the site, and that the treatment continues to be effective. In the absence of any site irritation or other problems it is possible to leave the infusion set in for longer periods.