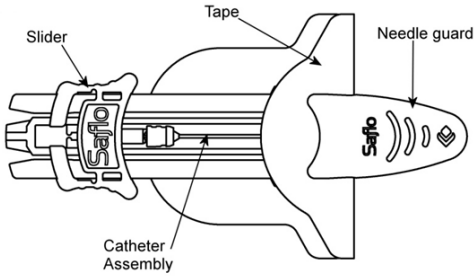
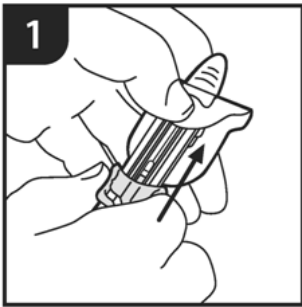


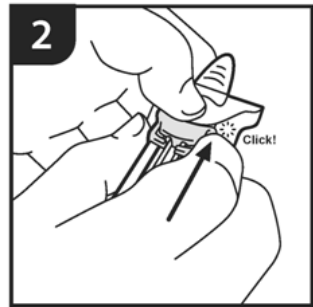
Saflo™ Catheter User Guide



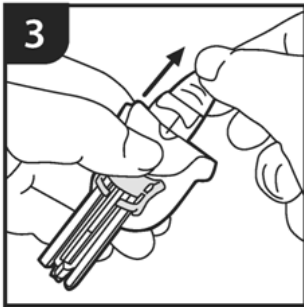
The introducer needle on this device is fully guarded to prevent needle stick injury. It must be discarded into a suitable sharps container for contaminated goods for safe final disposal.



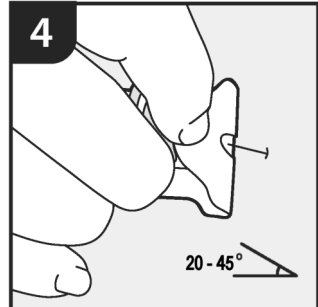
Remove catheter from packaging and hold firmly as shown.



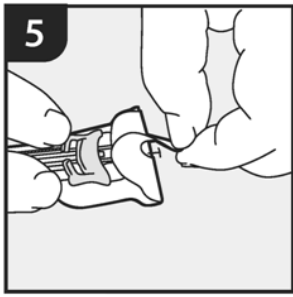
Advance the slider until it locks in the forward position – a soft 'click' will be heard.



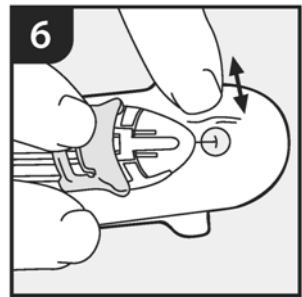
When ready to insert the catheter remove the protective needle guard. Take care not to touch or contaminate the exposed needle and catheter assembly.



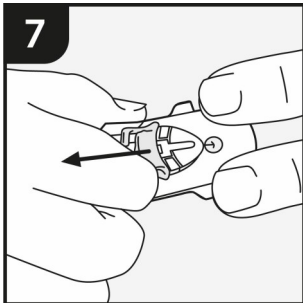
Insert the catheter/needle into the prepared infusion site at an appropriate angle. (Between 20 and 45 degrees depending on patient tissue condition).



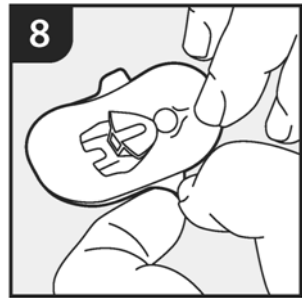
Remove the front protective cover from the tape



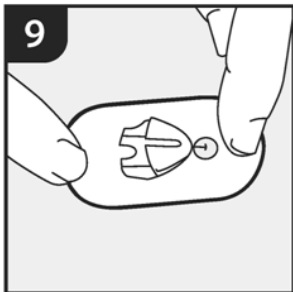
Smooth the tape onto the skin surface.



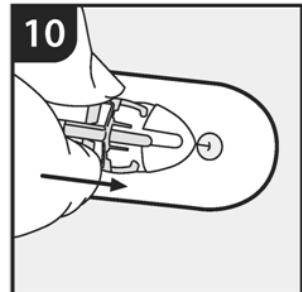
Hold the tape to prevent movement. Hold the sides of the slider and pull back with a smooth movement to the rear. At the end of the movement squeeze and pull to detach the needle frame from the catheter assembly .



Hold the tape front section and remove the protective tape cover from the back of the catheter assembly.



Smooth the tape down to the skin surface and examine the catheter insertion point through the clear area of the tape.



Prime the selected connection device according to local procedures and attach to the catheter. Where used with a pump, the pump manufacturers priming instructions should be followed.